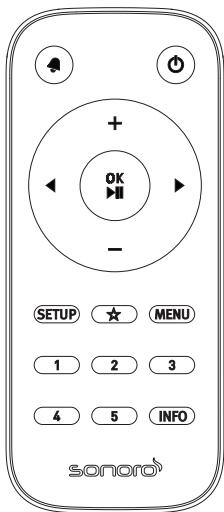


Remote control

SO-RC412



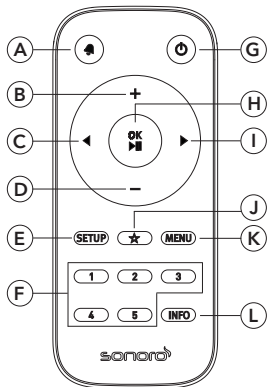
sonoro

INDEX

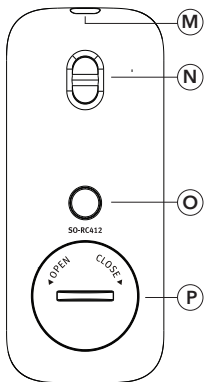
Deutsch.....	4
English.....	8
Français.....	12
Italiano.....	16
Nederlands.....	20
Dansk.....	24

Übersicht

Vorderseite



Rückseite



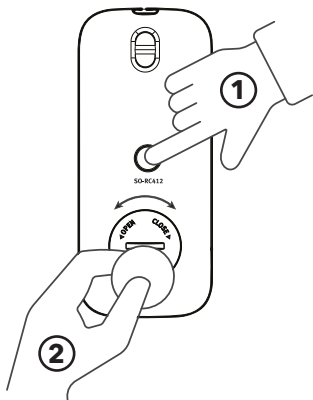
Übersicht

DE

- A Alarm (🔊)
- B Lautstärke lauter (+)
- C Links (◀)
- D Lautstärke leiser (-)
- E Einstelltaste (SETUP)
- F Sender-Voreinstellungen (1-5)
- G Standby-Taste (⏻)
- H Abspielen / Pause / OK (▶||)
- I Rechts (▶)
- J Speichertaste (☆)
- K Menütaste (MENU)
- L Informationstaste (INFO)
- M Infrarotsender
- N Öse für Trageband
- O Entriegelungstaste
- P Batteriefach

Batterie

Öffnen

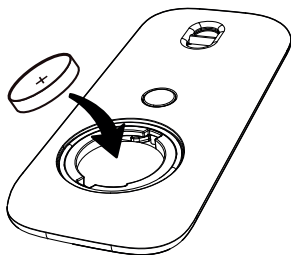


- 1 Drücken Sie den Knopf tief herunter, bis es klickt. Halten Sie den Knopf gedrückt.
- 2 Öffnen Sie mit einer Münze die Batteriefachabdeckung.

Batterie

DE

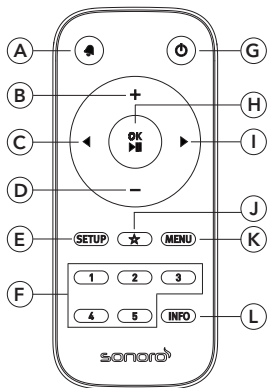
Einlegen



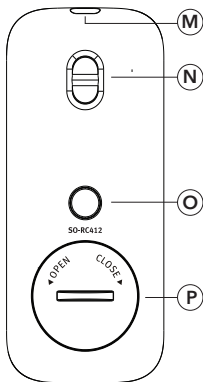
- ▶ Legen Sie die mitgelieferte Batterie (CR2025, 3 V) mit der Beschriftung (+) nach oben ein.
- ▶ Schließen Sie das Batteriefach.

Overview

Front



Back



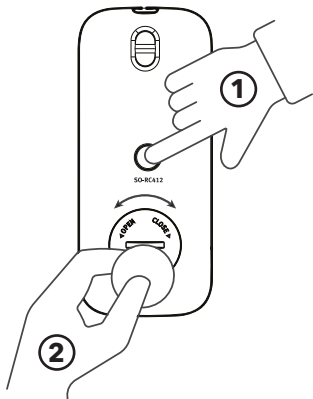
Overview

EN

- A Alarm (📣)
- B Volume up (+)
- C Left (◀)
- D Volume down (-)
- E Setup (SETUP)
- F Channel presets (1-5)
- G Standby (⏻)
- H Play / Pause / OK (▶||)
- I Right (▶)
- J Save (☆)
- K Menu (MENU)
- L Information (INFO)
- M Infrared transmitter
- N Eyelet for carrying strap
- O Unlock button
- P Battery compartment

Battery

Open

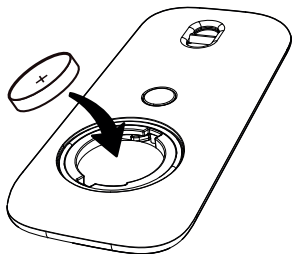


- ① Press the button deeply until it clicks. Press and hold the button.
- ② Use a coin to open the battery compartment cover.

Battery

EN

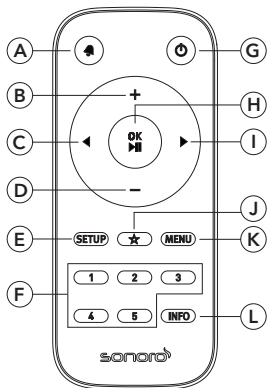
Insert



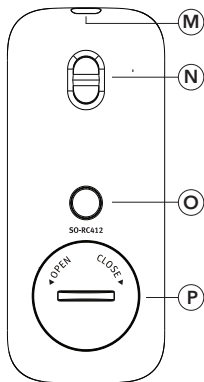
- ▶ Insert the included battery (CR2025, 3V) with the label (+) facing up.
- ▶ Close the battery compartment.

Aperçu

Devant



Dos



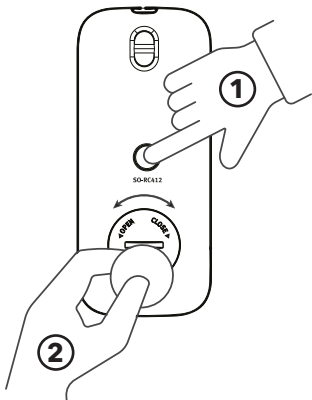
Aperçu

FR

- A Alarme (🔔)
- B Augmenter le volume (+)
- C Gauche (◀)
- D Diminuer le volume (-)
- E Bouton de réglage (SETUP)
- F Préréglages de chaînes (1-5)
- G Bouton veille (⏻)
- H Jouer/ Pause / OK (▶||)
- I Droite (▶)
- J Bouton Enregistrer (☆)
- K Menu (MENU)
- L Information (INFO)
- M Émetteur infrarouge
- N Oeillet pour sangle de transport
- O Bouton de déverrouillage
- P Compartiment à piles

Batterie

Ouvrir

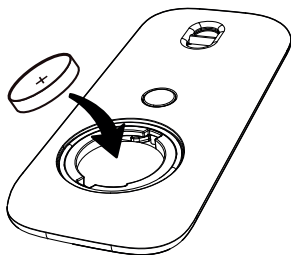


- ① Appuyez et maintenez profondément sur le bouton jusqu'à ce qu'il s'enclenche.
- ② Utilisez une pièce de monnaie pour ouvrir le couvercle du compartiment à piles.

Batterie

FR

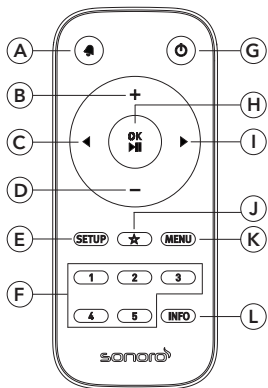
Insérer



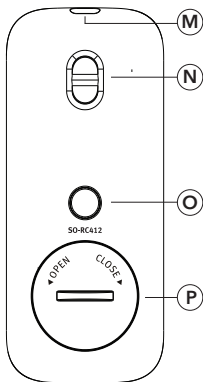
- ▶ Insérez la pile incluse (CR2025, 3V) avec l'étiquette (+) vers le haut.
- ▶ Fermez le compartiment à piles.

Panoramica

Davanti



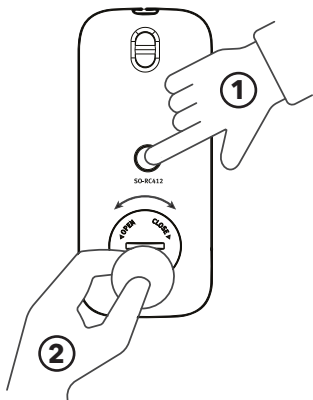
Indietro



- A Allarme (🔊)
- B Volume più alto (+)
- C Sinistra (◀)
- D Volume basso (-)
- E Pulsante di impostazione (SETUP)
- F Preimpostazioni dei canali (1-5)
- G Pulsante di attesa (⏸)
- H Giocare / Rottura / OK (▶)
- I Giusto (▶)
- J Pulsante Salva (☆)
- K Pulsante del menu (MENU)
- L Pulsante informazioni (INFO)
- M Trasmettitore a infrarossi
- N Occhiello per tracolla
- O Pulsante di sblocco
- P Compartimento della batteria

Batteria

Aprire

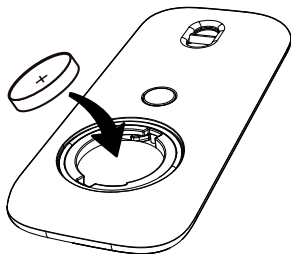


- ① Premere a fondo il pulsante finché non scatta. Tieni premuto il pulsante.
- ② Utilizzare una moneta per aprire il coperchio del vano batteria.

Batteria

IT

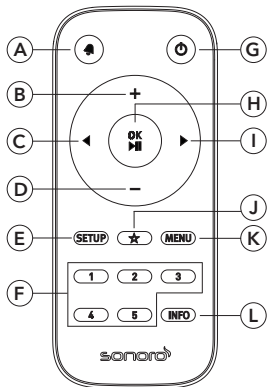
Inserire



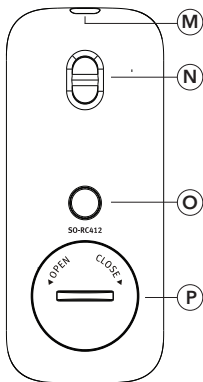
- ▶ Inserire la batteria inclusa (CR2025, 3 V) con l'etichetta (+) rivolta verso l'alto.
- ▶ Chiudere il vano batterie.

Overzicht

Voorkant



Achterkant



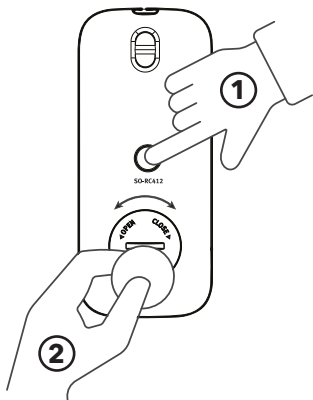
Overzicht

NL

- A Alarm (📣)
- B Volume luider (+)
- C Links (◀)
- D Volume verminderen (–)
- E Instelknop (SETUP)
- F Kanaalvoorinstellingen (1-5)
- G Standby-knop (⏻)
- H Toneelstuk / Pauze / OK (▶||)
- I Rechts (▶)
- J Knop Opslaan (☆)
- K Menuknop (MENU)
- L Informatieknop (INFO)
- M Infrarood zender
- N Oogje voor draagriem
- O Ontgrendelingsknop
- P Batterijcompartiment

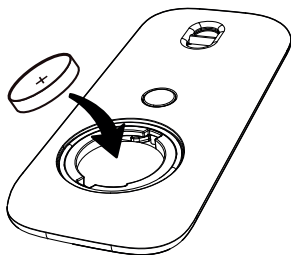
Batterij

Open



- ① Druk de knop diep in totdat deze klikt. Houd de knop ingedrukt.
- ② Gebruik een muntstuk om het deksel van het batterijcompartiment te openen.

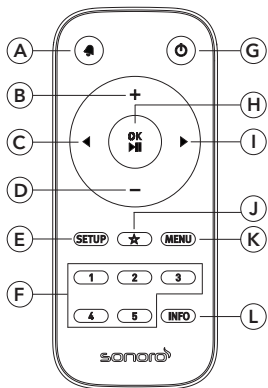
Invoegen



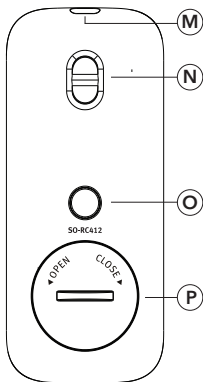
- ▶ Plaats de meegeleverde batterij (CR2025, 3V) met het label (+) naar boven gericht.
- ▶ Sluit het batterijcompartiment.

Oversigt

Foran



Tilbage



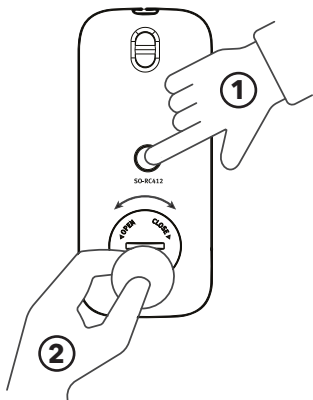
Oversigt

DK

- A Alarm (🔔)
- B Lydstyrke højere (+)
- C Venstre (◀)
- D Skrue ned (–)
- E Indstillingsknap (SETUP)
- F Kanalforudindstillinger (1-5)
- G Standby knap (⏻)
- H Spil / Pause / OK (▶||)
- I Højre (▶)
- J Gem knap (☆)
- K Menu (MENU)
- L Informationsknap (INFO)
- M Infrarød sender
- N Øje til bærerem
- O Lås op knap
- P Batterirum

Batteri

Åben

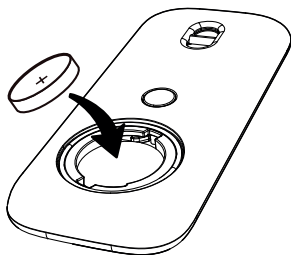


- 1 Tryk dybt på knappen, indtil den klikker. Tryk og hold knappen nede.
- 2 Brug en mønt til at åbne batterirummets dæksel.

Batteri

DK

Indsæt



- ▶ Indsæt det medfølgende batteri (CR2025, 3V) med etiketten (+) opad.
- ▶ Luk batterirummet.

Remote control SO-RC412
V1 / 03/24

Help?



www.support.sonoro.com

Tel. +49 2131 8834-141

E-Mail: support@sonoro.com

sonoro audio GmbH
Hammer Landstraße 45
41460 Neuss Deutschland